

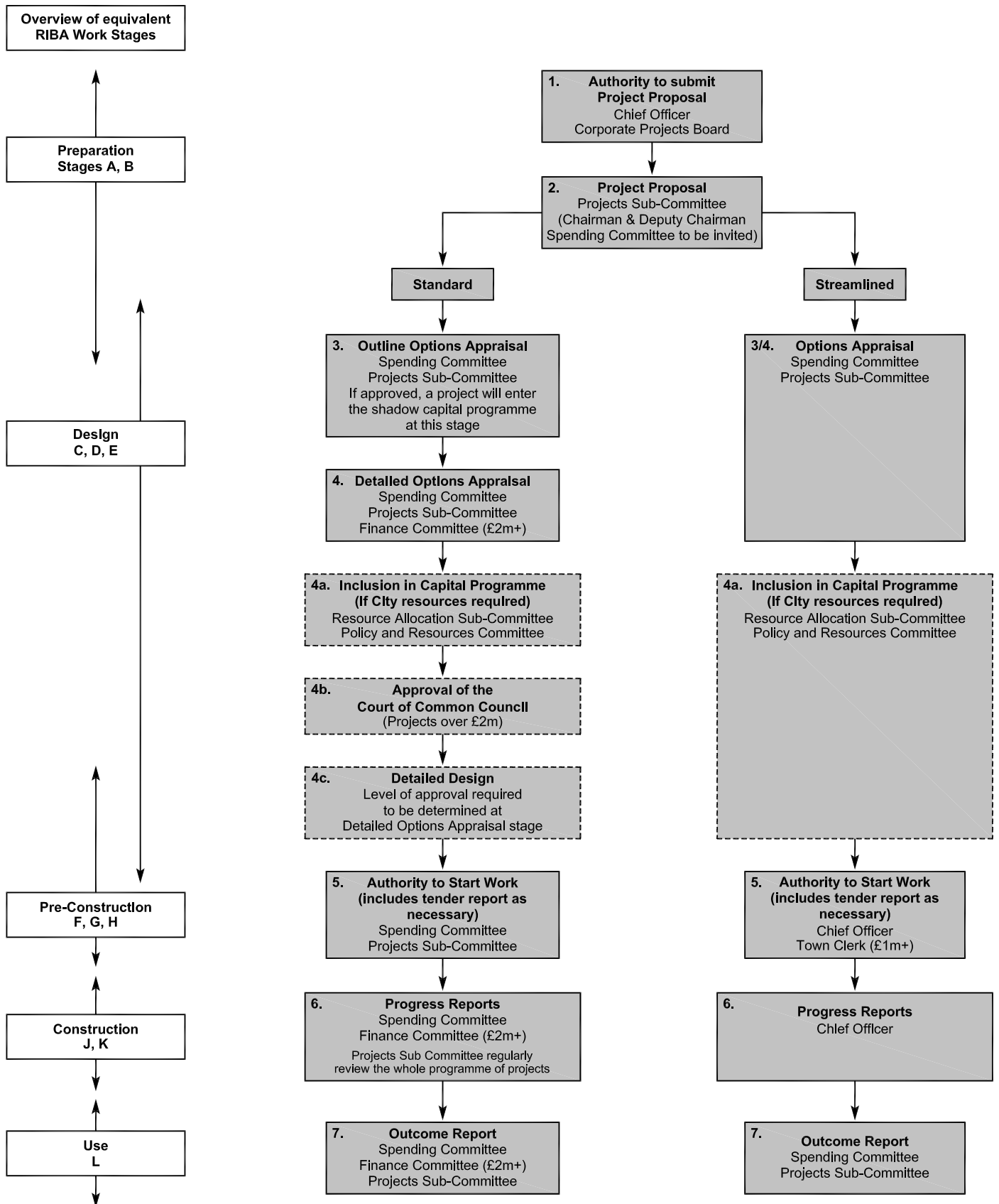
# Project Procedure

The procedure applies to projects that result in tangible, physical deliverables in the following categories:

Capital and Supplementary Revenue projects (including those within agreed strategies) >£50k

Routine Revenue projects >£250k

Capital and Supplementary Revenue projects delivered with ringfenced funds >£250k



| Risk Cost    | Low          | Medium       | High     |
|--------------|--------------|--------------|----------|
| Under £250k  | Stream-lined | Stream-lined | Standard |
| £250k to £2m | Stream-lined | Standard     | Standard |
| Over £2m     | Standard     | Standard     | Standard |